

Mr Howard Smith

Exeter City Planning Dept

SCANNED

CITY DEVELOPMENT

13 MAR 2023

RECEIVED

Dear Mr Smith

RE: PLANNING APPLICATION 22/1145/FUL - OBJECTION

Please see **before and after** proposed development visual below, which shows Stream Court from the junction of Haven Road, facing the houses numbered 7 to 14. This visual was produced by a Residents Group.

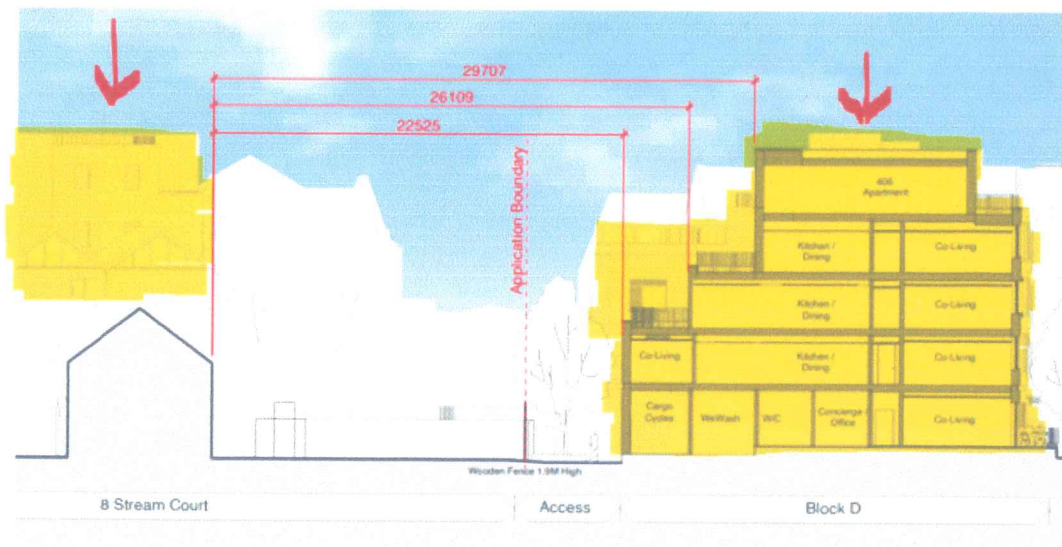


A request to the developer for this street level view was made following their criticism in the media, stating locally produced visuals were “entirely inaccurate”. The developer declined.

This is a fundamental view, due to the significant impact on Stream Court by the proposed development. I must therefore assume the above to be correct, with the developer refusing to assist the community and provide this requested visual.

I must come to this determination having reviewed the following drawing contained in this application, which evidences the size and impact on Stream Court, my home in the same row as number 8. You

will also note the considerable height of proposed Block A in the top left corner, which will overshadow Diamond Road but also impose onto Stream Court. Both blocks have large external communal terracing overlooking existing homes.



In view of this impact, I would like to understand how the council could become comfortable with agreeing such a structure so very close to small residential homes? Homes that will be subject to loss of privacy, light and sun. Homes that will be cast in new shadow for many hours, and be impacted by light, noise and disturbance pollution from the enormity of the development and the large communal terracing, on 3 levels of this 6 to 7 storey building, facing directly onto our homes, windows and gardens.

A Bargent 8th March 2023