

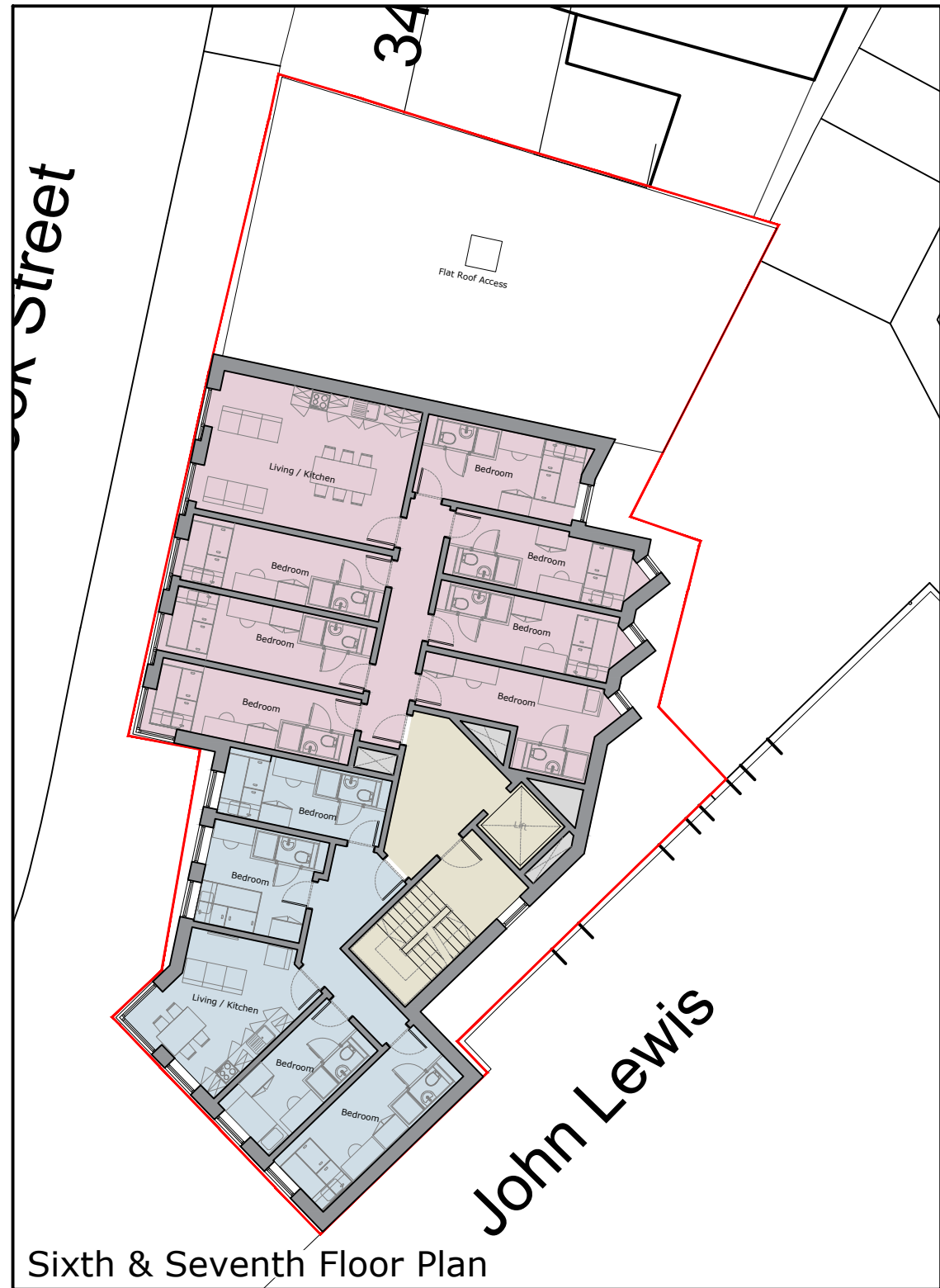
Ground Floor Plan



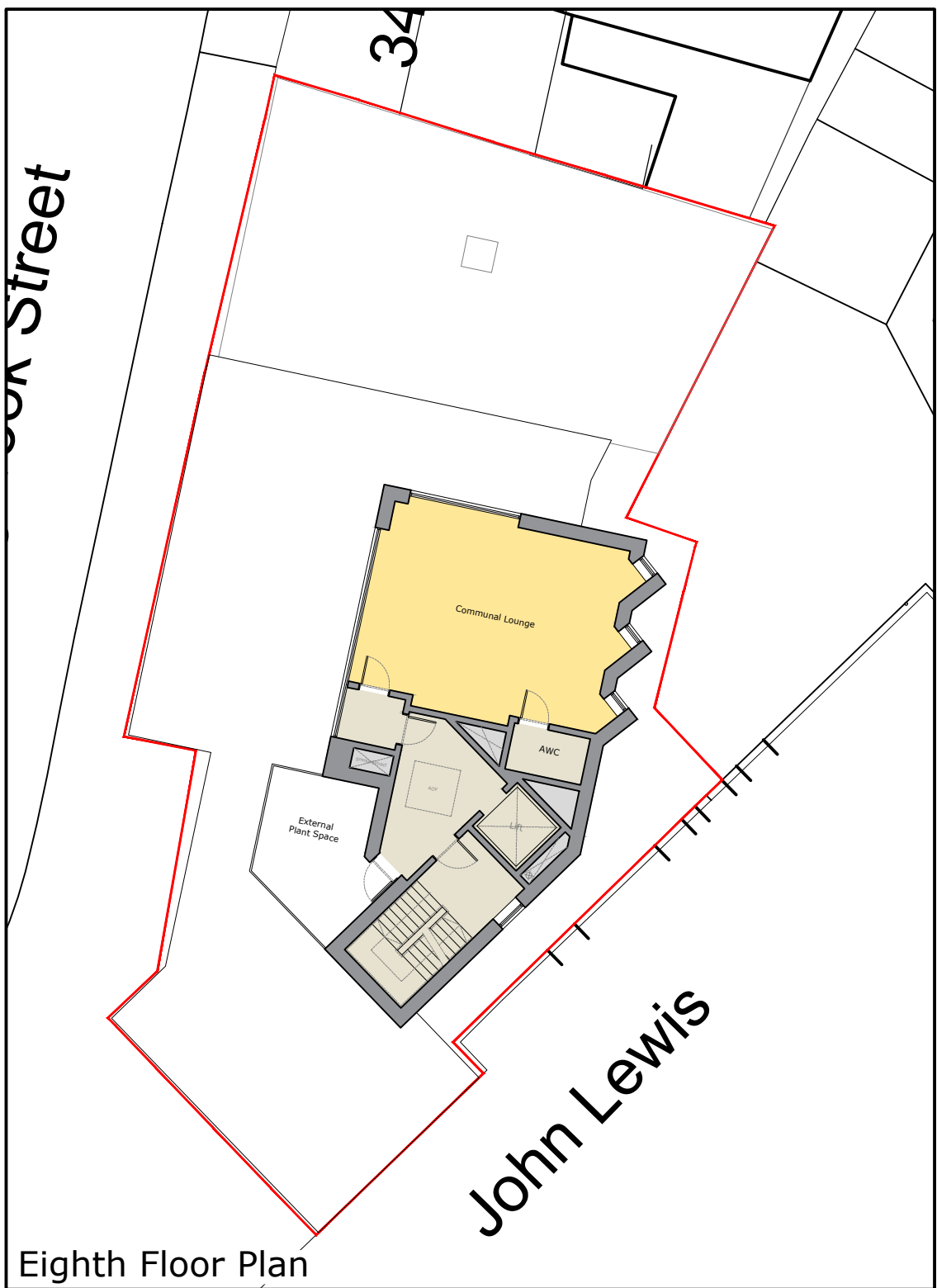
First Floor Plan



Second - Fifth Floor Plan



Sixth & Seventh Floor Plan

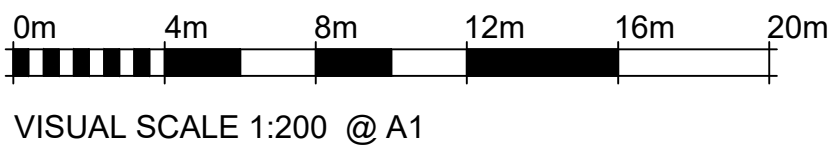


Eighth Floor Plan

Schedule of Accommodation

	7 Bed	6 Bed	5 Bed	4 Bed	Studio	Commercial Space	Total
Ground Floor	-	-	-	-	-	176m²	
First Floor	-	-	1	-	6	-	11
Second Floor	-	1	-	1	6	-	16
Third Floor	-	1	-	1	6	-	16
Fourth Floor	-	1	-	1	6	-	16
Fifth Floor	-	1	-	1	6	-	16
Sixth Floor	1	-	-	1	-	-	11
Seventh Floor	1	-	-	1	-	-	11
Eighth Floor	-	-	-	-	-	-	-
	2	4	1	6	30	Total	97 Beds

- Studio Flat
- 4 Bed Flat
- 5 Bed Flat
- 6 Bed Flat
- 7 Bed Flat
- Circulation Space
- Ancillary Space
- Commercial Space
- Communal Areas



Longbrook Street - Student Accommodation - Exeter

Do not scale from this drawing
The contractor is to check all dimensions on site and report any
discrepancies to the architect
All rights described in chapter IV of the copyright, designs and
patents act 1988 have been generally asserted
Notes

C	Plan layout amended to comply with regulatory requirements	13/01/23	PsW	DL
Rev	Description	Date	By	Chk

3-5 Bleeding Heart Yard,
Greville Street, London,
EC1N 8SJ
Telephone: +44(0)2038746707
Website: www.jeffersonsheard.com



Project
Longbrook Street
Exeter

Drawing
All Proposed Plans +
Schedule of Accommodation

Scale 1:100 @ A1	Drawn PsW	Date Jan '23
Drawing Purpose PLANNING SUBMISSION	Status S5	
Ref 2119-JSA-XX-XX-DR-A-PL116	Rev. C	
Job No. Origin Zone Level Type Dis. Number		