

General Notes

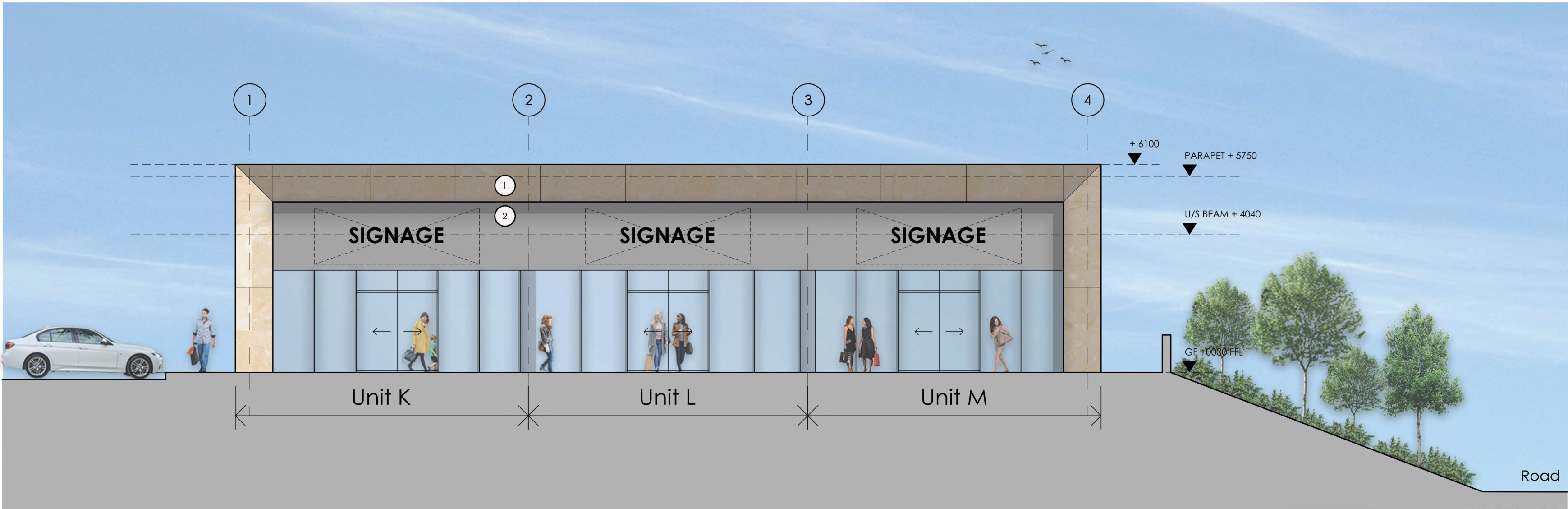
All site dimensions shall be verified by the Contractor on site prior to commencing any works.

Do not scale from this drawing.

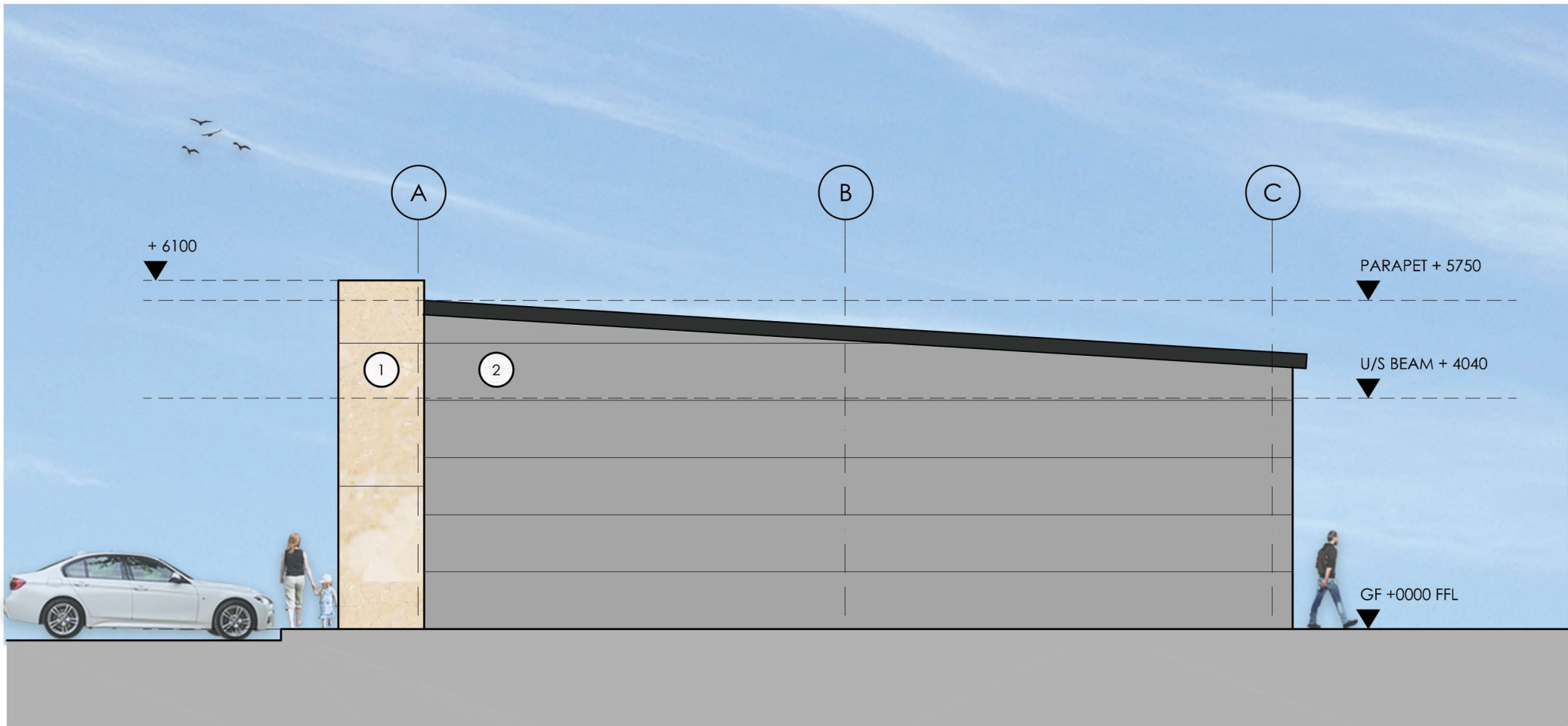
Only work to written dimensions.

This drawing is the property of Fletcher-Rae (UK) Limited (t/a Fletcher-Rae) and copyright is reserved by them. The drawing is not to be copied or disclosed by or to any unauthorised persons without the prior written consent of Fletcher-Rae (UK) Limited.

- 1 Jura limestone cladding, black granite plinth, all corners to be mitred and bonded to form fabricated returns, beige honed and brushed to factory conditions
- 2 Silver cladding



West Elevation



South Elevation

Revision

Scale 1:100@A1

Status PL

Drawn by AR

Date 06.12.2017

Client

Consolidated Property Group LLP

Project

Honiton Road, Exeter

Drawing Description

Proposed Block K-M Elevations (Indicative)

Drawing No. 15049_PL09 Rev.

fletcher|rae

Architects | Master Planners | Designers

Hill Quays, 5 Jordan Street, Manchester, M15 4PY

t +44 (0)161 242 1140

f +44 (0)161 242 1141

w www.fletcher-rae.com

e info@fletcher-rae.com