



Ground Floor Plan



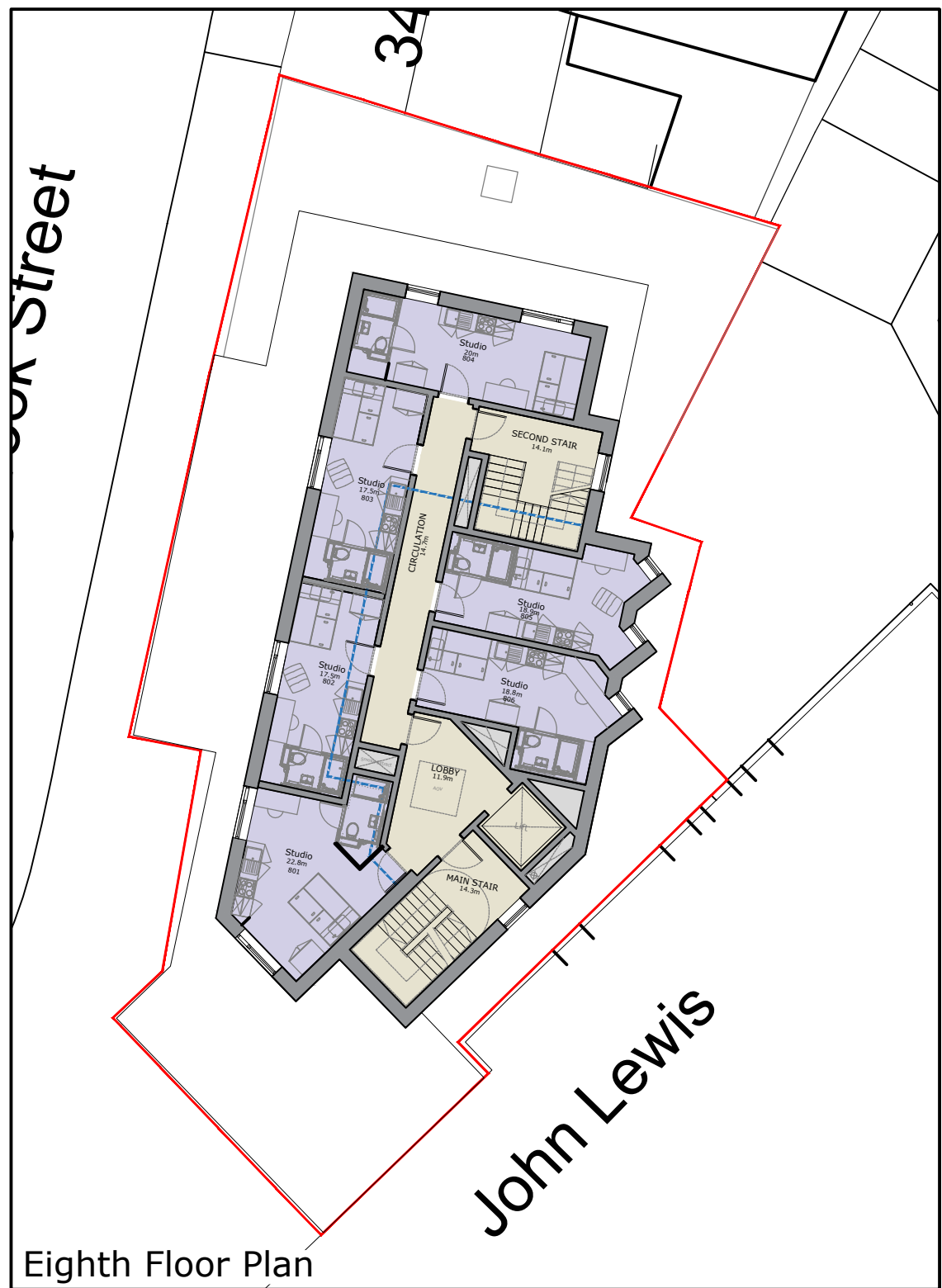
First Floor Plan



Second - Fifth Floor Plan



Sixth & Seventh Floor Plan



Eighth Floor Plan

Schedule of Accommodation

	Studio	WCH Studio	Commercial Space	Total
Ground Floor	-	-	88m ²	-
First Floor	12	1	-	13
Second Floor	13	1	-	14
Third Floor	13	1	-	14
Fourth Floor	13	1	-	14
Fifth Floor	13	1	-	14
Sixth Floor	10	1	-	11
Seventh Floor	10	1	-	11
Eighth Floor	6	-	-	6
Total	90	7	88m2	97 Beds

- Studio Flat

WCH Studio

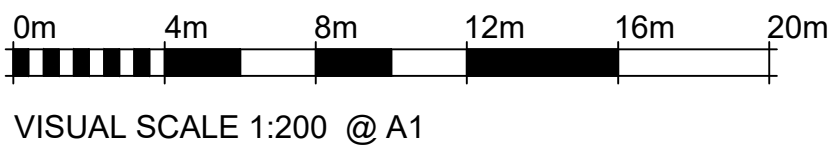
Extent of boundary line

Extent of previous building line
- Circulation Space

Ancillary Space

Commercial Space

Communal Areas



Longbrook Street - Student Accommodation - Exeter

Do not scale from this drawing
The contractor is to check all dimensions on site and report any discrepancies to the architect
All rights described in chapter IV of the copyright, designs and patents act 1988 have been generally asserted
Notes

G	Planning Issue	30/10/23	CJS	DL
F	Planning Issue	22/09/23	CJS	DL
E	Room Numbers and Areas added	13/09/23	CJS	DL
D	Accommodation type and schedule of accommodation amended	07/08/23	WC	JD
C	Plan layout amended to comply with regulatory requirements	13/01/23	PsW	DL
Rev	Description	Date	By	Chk

3-5 Bleeding Heart Yard,
Greville Street, London,
EC1N 8SJ

Telephone: +44(0)2038746707
Website: www.jeffersonsheard.com



Project
Longbrook Street
Exeter

Drawing
All Proposed Plans +
Schedule of Accommodation

Scale	1:100 @ A1	Drawn	PsW	Date	Jan '23
Drawing Purpose	PLANNING SUBMISSION			Status	S5
Ref	2119-JSA-XX-XX-DR-A-PL116			Rev.	G
Job No.	Origin	Zone	Level	Type	Dis. Number