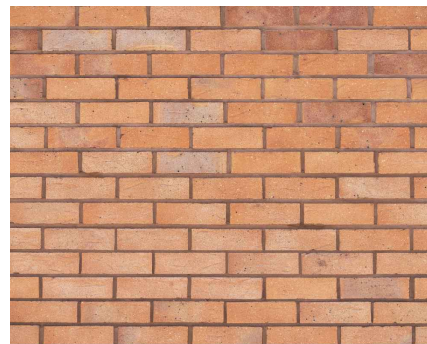
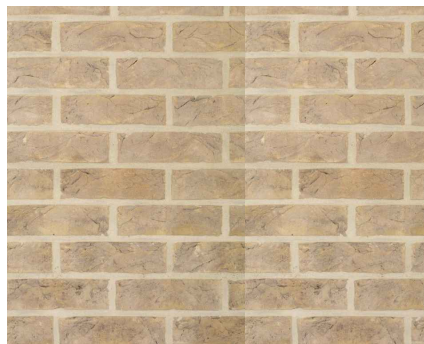


01 - Facing Brickwork & Retaining Wall Feature
Colour: Red Stock



02 - Facing Brickwork
Colour: Multi Buff



03 - Facing Brickwork
Colour: Multi Buff Light



04a - Facing Stonework
Colour: Red Sandstone



04b - Facing Stonework
Colour: Light Beige



05 - Gabion Retaining Walls



06a - Standing Seam Metal Cladding
Colour: Dark Grey



06b - Standing Seam Metal Cladding
Colour: Light Grey



07 - Metal Shingle Cladding
Colour: Mid Grey



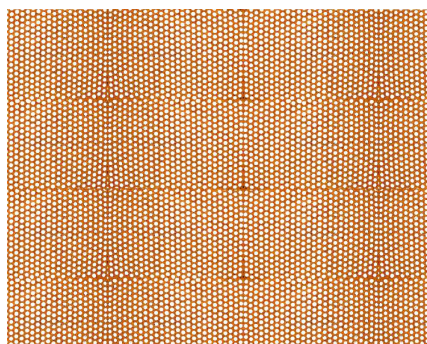
08 - Castellated Metal Cladding
Colour: Dark Grey



09a - Anodised Window Panels
Colour: Bronze



09b - Anodised Window Panels
Colour: Light Grey



10 - Cycle Store Mesh Screen
Colour/Finish: Corten Steel



11a - Metal External Window and Door Surrounds
Colour: Dark Grey



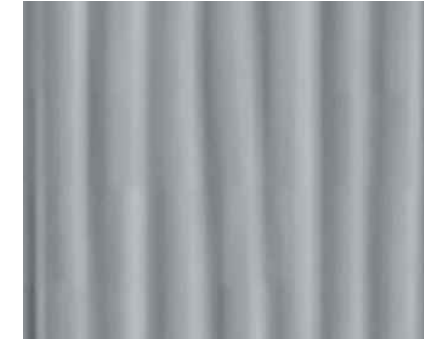
11b - Metal External Window and Door Surrounds
Colour: Bronze



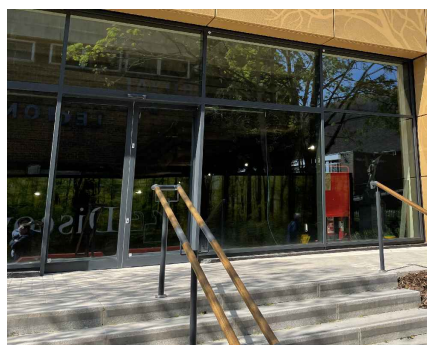
12 - Recessed Metal Channel
Colour: Dark Grey



13 Metal Wave Profile Window Reveals
Colour: Gold



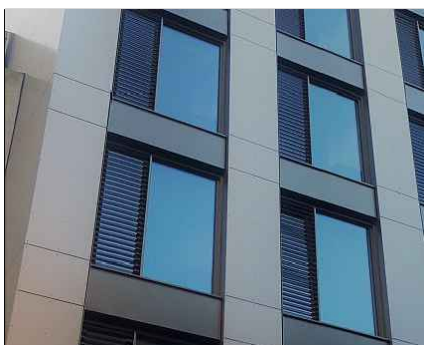
14 - Metal Wave Profile Soffit
Colour: Grey



15 - Framed Curtain Wall Glazing
PPC Aluminium Frame
Colour: Dark Grey



16 - PPC Aluminium External Window and Door Frames
Colour: Dark Grey



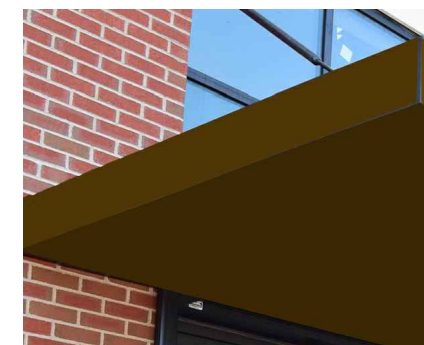
17 - External Louvred Window & Door Frames
Colour: Dark Grey



18 - Obscured Window Glazing



19 - Steel Balcony and Frame
Colour: Dark Grey



20 - Metal Canopy
Colour: Bronze

Rev	Comments	Date	Dr	Ch
G1	Planning Issue	29-07-2022	JW	AM
G2	Revised Planning Issue	16-02-2023	JW	AM

General Notes

- This drawing is to be read in conjunction with the following information:
- Architectural planning elevations
 - Landscape Architect's Information
 - Design & Access statement

PWA Code:	Notes: Use annotated dimensions only. All dimensions in millimeters unless otherwise stated. This drawing is to be read in conjunction with all other related material. Any discrepancies, conflicts or errors must be reported to Piper Whitlock Architecture before commencing work.
20021	

Drawing Title:
**Proposed Material Schedule
Sheet 1**

Client:
Welbeck CP

Project Ref: Orig: Zone: Lev: Type: Role: Num: Rev:
HREXE - PWA-00-XX - DR-A-0005 - G2

Status: Stage: Scale @ A3:
PLANNING 3 NTS

Project Name:
**Haven Banks,
Exeter**



©Piper Whitlock Architecture Ltd.
2nd Floor, Anglo St. James House, 39a Southgate Street, Winchester, Hampshire, SO23 9EH
Tel: 01962 843596, Email: enquiries@piperwhitlock.co.uk, www.piperwhitlock.co.uk