

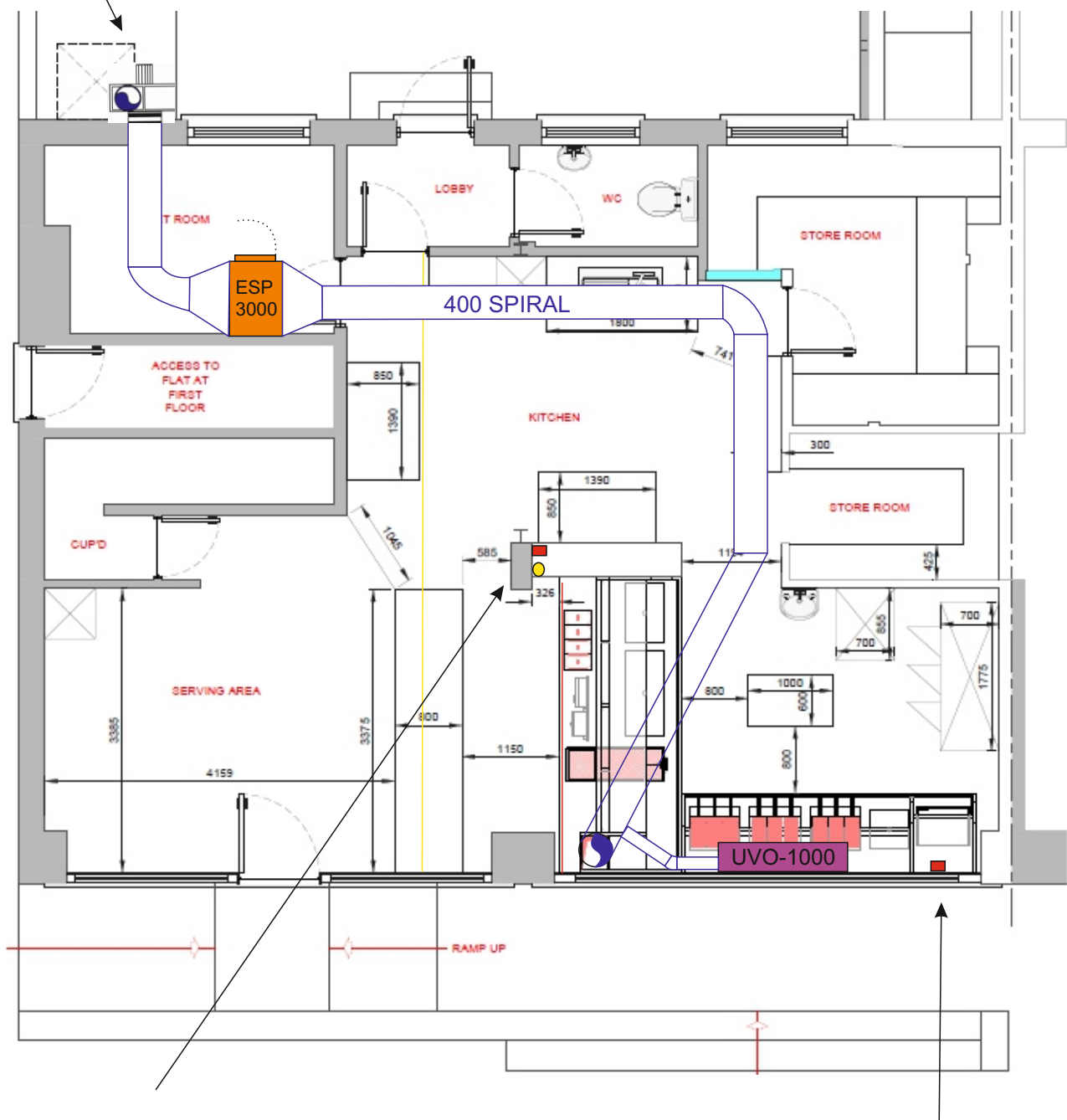
CNA400 fan mounted externally on anti-vibration feet. 400mm spiral rising 1m above eaves terminating with high velocity cowl.

ESP
3000

Esp 3000 - 900Wx630x640D
85kg. Mounted at high level.

UVO-1000

UVO-1000 - 1568Wx350Hx363D
50Kg. Mounted at high level.
150mm spiral entering the
400mm spiral.



- 42mm gas isolation valve
- Electric isolator
- 400v separate supply for grill