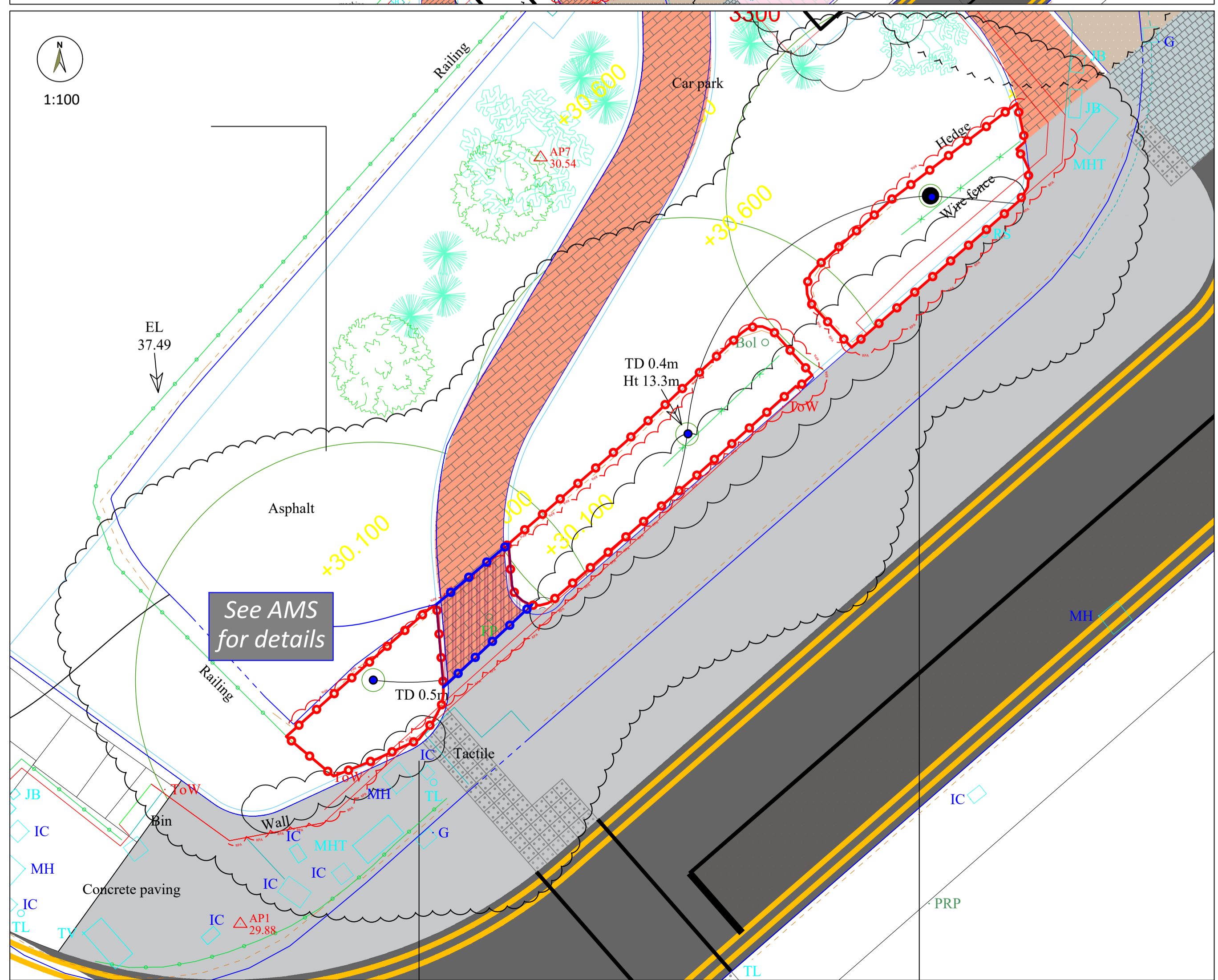


KEY	
BS 5837:2012 Tree Category	
A	B C U
TREE PROTECTION PLAN - DETAILS	
Tree / Hedge Removal	
	To be removed - Dashed
	FELL
Arboricultural Method Statement/s	
All AMS areas are to be worked in strict accordance to detailed arboricultural method statements.	
	Special protection area - AMS
AMS: a detailed Arboricultural Method Statement to be agreed with the LPA prior to commencement of development	
Fencing will only be removed when works are taking place to install pathway. These works will be carried out under supervision of the arboricultural clerk.	
Construction Exclusion Zone/s	
	Construction Exclusion Zone - CEZ
All operations inside of Tree Protective Fencing are to be supervised by an appointed arboriculturalist.	
Tree protective barrier/s	
	Tree protective fence / barrier (See Detail 1)
	Tree protective fence / barrier (See Detail 4)



Documents/plans supplied by client for use in this drawing:
 Topo Survey LHC118_LS
 Fixed Layout 17161-L93.01.C

Accompanying documents which must be read in conjunction with this drawing:
 05215.AMS1. 2.10.19
 05215.AIA.10.10.19
 05215.TPC.15.01.2019
 05215.TREESURVEY.09.01.2019

- Notes**
- All dimensions are in metres, unless otherwise stated.
 - Shade Arcs are only shown for trees which are +10m in height.
 - The original of this drawing was produced in colour, a monochrome version should therefore not be relied upon.

Client:	Curlw Alternative Property LP
Project:	Harlequins Centre, Exeter, Paul St.
Title:	Tree Protection Plan 2 of 2
Date:	2/10/19
Scale:	##### @ A1
Drawn:	KS
Checked:	JEG

Dwg Ref: 05215 TPP 02.10.19

ASPECT TREE CONSULTANCY
 Aspect Tree Consultancy Ltd.
 Unit F, Kach Business Park
 Pottery Road
 Bovey Tracey TQ13 9TZ
 Tel: 01364 644822
 www.fresh-aspect.com

Missing or invalid reference
 File: \05215.AMS1.02.10.2019.pdf
 Sheet: 1

Missing or invalid reference
 File: \05215.AMS1.02.10.2019.pdf
 Sheet: 2

TREE PROTECTION FENCING- DETAILS	DETAIL 1: Specification For Protective Barrier (Default - BS 5837) Subject to ground conditions and site specific health and safety assessment
<p>DETAIL 4: Specification For Protective Barrier</p> <p>Stabilizer strut with base plate secured with ground pins</p>	<p>Key</p> <ol style="list-style-type: none"> Standard scaffold poles Heavy gauge 2m tall galvanized tube and welded mesh infill panels Panels secured to uprights and cross-members with wire ties Ground level Uprights driven into the ground until secure (minimum depth 0.6m) Standard scaffold clamps