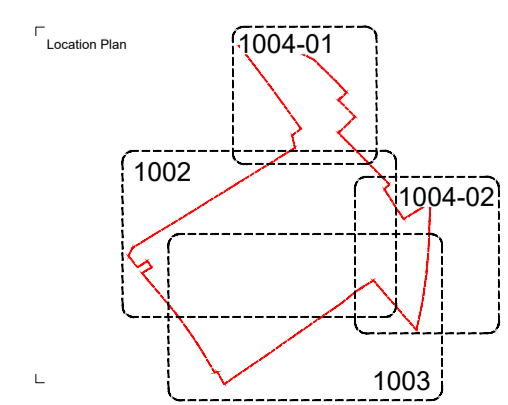
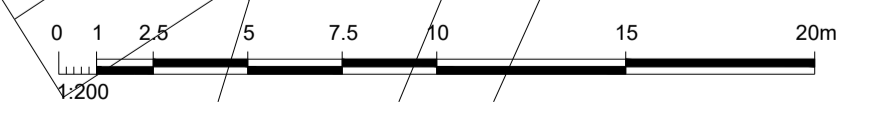


Refer to D3141-FAB-00-XX-DR-L-1002

Refer to D3141-FAB-00-XX-DR-L-1002-04



Refer to D3141-FAB-00-XX-DR-L-1002



**fabik** landscape architects  
 Lenton House | 15 Lenton Street | Abingdon | Hampshire | GU24 1HG  
 T: 01252 932510 | E: alton@fabrik.com | W: www.fabrik.com

Project: **Haven Banks, Exeter** Client: **Welbeck CP**

Drawing Title: **Ground Floor Landscape General Arrangement Plan - Sheet 2 of 3**

Project Number: **D3141 FAB 00 GF DR L 1003 PLO2**

Issue Number: **00** Date: **15-02-2023** Zone: **FAB** Level: **GF** File Type: **DR** Scale: **L** Number: **1003** Revision: **PLO2**

**Notes:**  
 Refer to fabrik drawing D3141-00-XX-DR-L-1000 for Legend and Illustrative Soft Landscape Schedule

Rev	Date	Description	By	Check
PLO2	15-02-2023	Issued for Planning following LPA comments	sw	hg
PLO1	15-07-2022	Issued for Planning	sw	hg
00	15-02-2023	Drawn	sw	hg

- External References:**
- J103141 Haven Road, Exeter05 CAD01 AutocadM2 - Model01 Revised SchemeD3141-FAB-00-XX-M2L-1000\_GA\_Ground
  - J103141 Haven Road, Exeter05 CAD01 AutocadM2 - Model02 Revised SchemeD3141-FAB-00-XX-M2L-1001\_G0
  - J103141 Haven Road, Exeter05 CAD01 AutocadM2 - Model03 Revised SchemeD3141-FAB-00-XX-M2L-1002\_Boundary
  - J103141 Haven Road, Exeter05 CAD01 AutocadM2 - Model04 Revised SchemeD3141-FAB-00-XX-M2L-1003\_Blocks GF
  - J103141 Haven Road, Exeter05 CAD01 AutocadM2 - Model05 Revised SchemeD3141-FAB-00-XX-M2L-1004\_Blocks GF
  - J103141 Haven Road, Exeter05 CAD01 AutocadM2 - Model06 Revised SchemeD3141-FAB-00-XX-M2L-1005\_Blocks GF
  - J103141 Haven Road, Exeter05 CAD01 AutocadM2 - Model07 Revised SchemeD3141-FAB-00-XX-M2L-1006\_Blocks GF
  - J103141 Haven Road, Exeter05 CAD01 AutocadM2 - Model08 Revised SchemeD3141-FAB-00-XX-M2L-1007\_Blocks GF
  - J103141 Haven Road, Exeter05 CAD01 AutocadM2 - Model09 Revised SchemeD3141-FAB-00-XX-M2L-1008\_Blocks GF
  - J103141 Haven Road, Exeter05 CAD01 AutocadM2 - Model10 Revised SchemeD3141-FAB-00-XX-M2L-1009\_Blocks GF
  - J103141 Haven Road, Exeter05 CAD01 AutocadM2 - Model11 Revised SchemeD3141-FAB-00-XX-M2L-1010\_Blocks GF
  - J103141 Haven Road, Exeter05 CAD01 AutocadM2 - Model12 Revised SchemeD3141-FAB-00-XX-M2L-1011\_Blocks GF
  - J103141 Haven Road, Exeter05 CAD01 AutocadM2 - Model13 Revised SchemeD3141-FAB-00-XX-M2L-1012\_Blocks GF
  - J103141 Haven Road, Exeter05 CAD01 AutocadM2 - Model14 Revised SchemeD3141-FAB-00-XX-M2L-1013\_Blocks GF
  - J103141 Haven Road, Exeter05 CAD01 AutocadM2 - Model15 Revised SchemeD3141-FAB-00-XX-M2L-1014\_Blocks GF
  - J103141 Haven Road, Exeter05 CAD01 AutocadM2 - Model16 Revised SchemeD3141-FAB-00-XX-M2L-1015\_Blocks GF
  - J103141 Haven Road, Exeter05 CAD01 AutocadM2 - Model17 Revised SchemeD3141-FAB-00-XX-M2L-1016\_Blocks GF
  - J103141 Haven Road, Exeter05 CAD01 AutocadM2 - Model18 Revised SchemeD3141-FAB-00-XX-M2L-1017\_Blocks GF
  - J103141 Haven Road, Exeter05 CAD01 AutocadM2 - Model19 Revised SchemeD3141-FAB-00-XX-M2L-1018\_Blocks GF
  - J103141 Haven Road, Exeter05 CAD01 AutocadM2 - Model20 Revised SchemeD3141-FAB-00-XX-M2L-1019\_Blocks GF
  - J103141 Haven Road, Exeter05 CAD01 AutocadM2 - Model21 Revised SchemeD3141-FAB-00-XX-M2L-1020\_Blocks GF

1. This drawing is copyright and shall not be copied or reproduced without written consent from the owner.  
 2. Do not scale from this drawing. Only figured dimensions are to be taken from this drawing.  
 3. All contractors shall be responsible for setting and checking all dimensions related to the works shown on the drawing prior to fabrication or setting out.  
 4. This drawing uses coloured lines. Please do not rely on a monochrome copy.