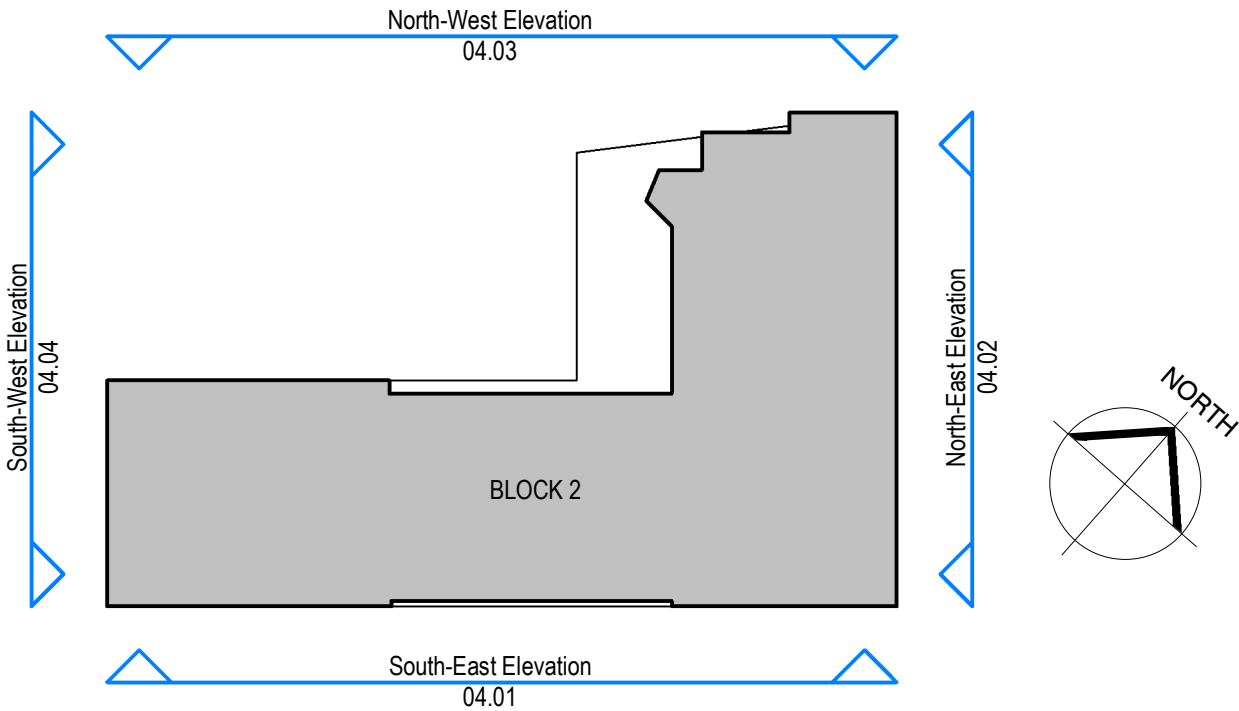


Elevation Key



Final location of habitat boxes to be agreed

Material Schedule

| Reference | Material   |
|-----------|--|
| 1         | Red polished Sandstone coloured cladding panel   |
| 2         | Portland Stone coloured cladding panel   |
| 3         | Pale red brick slip cladding panels with natural cement mortar   |
| 4         | Bronze PPC aluminium curtain wall system with sliding doors and pale Sandstone effect mullions                               |
| 5         | Bronze PPC aluminium curtain wall system with doors (where shown)  |
| 6         | Bronze PPC aluminium doors   |
| 7         | Perforated aluminium screening panel with inset printed artwork  |
| 8         | Bronze PPC aluminium curtain wall system, with opening lights (where shown), spandrel panels and ceramic backed glass panels |
| 9         | Pale yellow brick slip cladding panels with natural cement mortar  |
| 10        | Metal parapet cappings to match standing seam  |
| 11        | PPC aluminium cladding to lift enclosure   |
| 15        | Bat habitat boxes to Ecologists details  |
| 16        | Swift habitat boxes to Ecologists details  |
| 17        | Flat roofing membrane  |
| 18        | Sedum green roof system  |
| 19        | Photovoltaic panels  |
| 20        | Metal standing seam cladding   |
| 21        | Bronze PPC Aluminium feature window surrounds  |

| REV | DATE     | COMMENT  | AUTH/CHKD |
|-----|----------|--|-----------|
| C03 | 23/07/20 | Revised Planning Drawings - Reduced heights Block 1 and Block 2 and minor elevation amendments | JS/RB     |
| C02 | 11.05.20 | Updated for Revised Planning Application   | JS/MP     |
| P6  | 04.05.20 | Draft Issue  | JS/MP     |
| C01 | 15.10.19 | Planning Issue   | JS / MP   |
| P5  | 27.09.19 | DRAFT PLANNING APPLICATION ISSUE   | PA / MP   |
| P4  | 19.08.19 | ISSUED FOR CO-ORDINATION   | PA / MP   |
| P3  | 10.09.19 | DESIGN DEVELOPMENT ISSUE FOR INFORMATION   | PA / MP   |
| P2  | 11.07.19 | DRAFT ISSUE FOR INFORMATION  | PA / MP   |
| P1  | 07.06.19 | DRAFT ISSUE FOR CO-ORDINATION  | PA / MP   |

|   |          |                    |
|---|----------|--------------------|
| PROJECT TITLE   |          |                    |
| Harlequins Block 2  |          |                    |
| DETAIL  |          |                    |
| B2 North East Elevation   |          |                    |
| DRAWING NUMBER (PROJECT-ORIGINATOR-ZONE-LEVEL-TYPE-ROLE-NUMBER)   |          |                    |
| EHQ- LHC - 02 - ZZ - DR - A - 04.04   |          |                    |
| STATUS  |          | STATUS DESCRIPTION |
| S2  |          | Planning Issue     |
| REVISION  | DATE     | SCALE              |
| C03   | 03/04/19 | 1 : 100@A1         |
| CONTRACTORS MUST CHECK ALL DIMENSIONS ON SITE - ONLY FIGURED DIMENSIONS ARE TO BE WORKED FROM - DISCREPANCIES MUST BE REPORTED TO THE ARCHITECT BEFORE PROCEEDING & THIS DRAWING IS COPYRIGHT |          | LHC PROJECT NUMBER |
|   |          | 17161              |